

Eagle - Big Indian Col elevations 222-19 11/8/07

site	P	Δp	Δe	↑	e calc	e map	time	R
(A) Seager trailhead	29.63	0.00	←	↑	(0.860)	1970'	9:10 AM	$\begin{aligned} &3140' - 1970' = 1170' \\ &29.63 - 28.27 = 1.36'' \\ &= \frac{1170'}{0.860} \\ &= 1349'' \\ &= 28.24'' \end{aligned}$
(B) Shandalen Brook ^{Lean to}	29.07	0.56	482	↑	2452'	2450'	10:15 AM	
(C) 1st big NEM	28.70	0.93	800	↑	2770'			
(D) trail levels	28.40	1.23	1058	↑	3028'		10:43	
(E) trail junc. N of col	28.27	1.36	1170	↑	3140'	3140	10:57 lunch	
(F) col	28.30	1.33	1144	↓	3114'	3100	11:25	
(G) terrace in NEM grave	28.35	1.28	1101	↓	3071			
(E) trail junc. N of col	28.24	1.31	1170	↓	(0.893) 3140'	3140	12:07 PM	
(H) On Eagle Mtn. trail	28.20	1.35	1206	↑	3176'	3160	12:45	
(I) Reenter yellow trail	28.33	1.22	1089	↑	3059		1:06	
(D) trail levels	28.33	1.22	991	↑	2961		1:19	
(J) Lower hem. grave on S	28.44	1.11	991	↑	2961'			
(K) terrace on trail	28.71	0.84	750	↑	2720'			
(B) Shandalen Brook leans to	29.01	0.54	482	↑	2452'	2450'	1:57 → 2:06	
(A) Seager trailhead	29.55	0.00	←	↓	—	1970'	3:10	
(N) dammed BC on N	28.65	0.90	804	↓	2774			
(M) mid lower grave	28.44	1.11	991	↓	2961'			

See also Transit # 58 and pp 222-13ff.

Trail sign distances: Junc. is 3.0 miles from Seager + 0.9 mile from lean to.

Eagle Mtn is 1.1, Big Indian 1.4 and Biscuit Brook Trail Head 5.8 miles

$\frac{1170'}{1.31''} = 0.893$

Hemlock repro.: general conclusions

Many mature hemlocks ^{CRANKS} are flagged. Difficult lives allow ages to seldom exceed 200 years + dbhs > 30"

The number of middle-aged + mature trees may slightly exceed the # of seedlings + saplings. In addition to the two dead mature HEMS on Transect #58 (not observed this day), 6 more were found. Live hemlocks ^{still} → are all-aged, suggesting continuous repro.

The grove will probably be in existence a century or two from now, barring a major catastrophe, but may eventually die out because of a lack of repro. Deer browse is nil.

Hemlock seedlings + saplings are NOT found under:-

1. Mature dense hemlock shade, e.g. at 1
2. Beech dense thicket heavy shade
3. Dense DP, SCOMP, RS + RA patches, but those are few here in a continuous forest.

Hemlock seedlings + saplings are found under:-

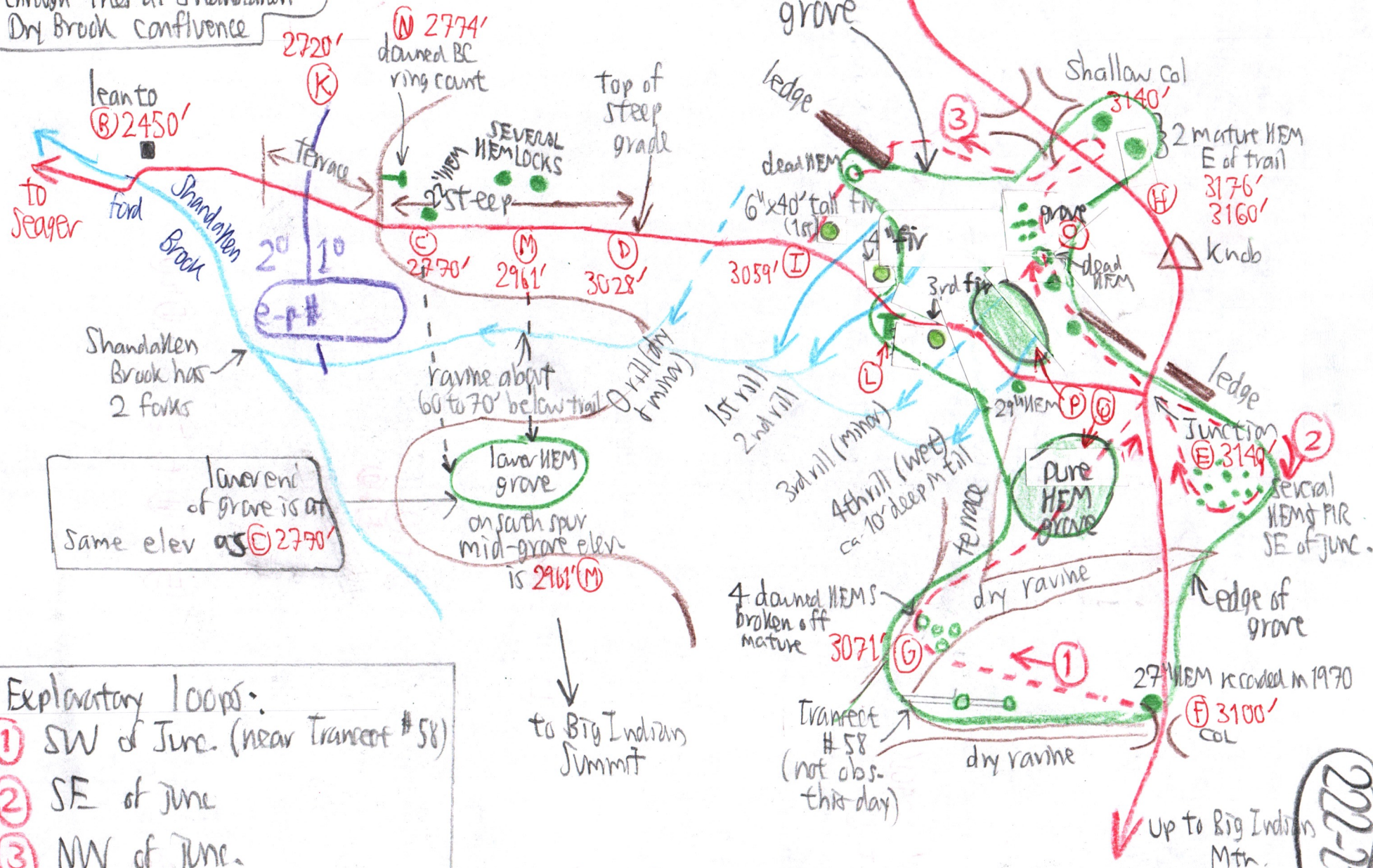
1. Under RM saplings, 1 + B + MO
2. on top of boulders + HEM logs where hardwood litter does not accumulate so heavily.
3. Some on forest floor.

Some seedlings are 1 ft high, 10 to 12 y old, and 2 of 5 in a cluster with some needle loss. One 8 year hemlock produced a leader 6" long. Most leaders are considerably less.

BOGS would have been the LAST places 5000y ago where hemlock crashed because of draughts, re they'd persist longest in the bogs.

N approx.

Doubletop Mtn - clearly visible through trees at Shandaken - Dry Brook confluence



Exploratory loops:

- ① SW of June. (near transect # 58)
 - ② SE of June
 - ③ NW of June.
- NO HEMS NE of June.

to Big Indians Summit

up to Big Indians Mtn.

17-21

Vegetation

(A) In vicinity of Drury Brook, HEM repro is abundant (several feet tall) under a young KB thicket.

(N) Ring cant on downed 2274/ BC: 28" dbh broken off 5' up, only 110 y.

22770' > 2961' Lower (C) to (M) South HEM grove on spur across a ravine. Not visited, but should be because it's 10' + its repro. studied.

Several mature repro. N of trail, too.

(P) 2nd densest portion of upper grove. Mature HEMS > 20". The fallen tree at (L) has 150 y at 24", but height of trail-clearing cut is hard to determine - possibly 20' up.

(E) HEMS to SE of Junc. are not particularly large + are mixed with Scot-fir. Site predom. hdwds. All < 100 y.

(G) The hiking stick, a ski pole this time, was estimated to be 4 ft = 48" long, but actually is 52". Therefore, two HEMS

dead + down were inaccurately measured in height.

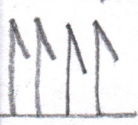
30" dbh, 45' tree → actually 49 ft tall
(Multiply by $\frac{52}{48} = 1.083$)
with about 200 rings

Radial growth is about 1 to 2 mm yr, so that a tree (Use 1.5 mm/y):
12" dbh = 6" radius = 6 mm is about 102 y and
24" dbh = 12" radius = 12 mm is about 203 y and
30" dbh = 15" radius = 15 mm is about 255 y.

52' tree is actually 56 ft. tall at 24" dbh. (52×1.083)

(Q) This portion of the grove is the densest, with no repro. beneath of any tree spp.

(E) to (O) Two old trees between these 2 points, then at (O) an open grove with a about 1/2 dozen trees 6" to 24" + about as many saplings. Two more 24" on E side of trail to Eagle Mtn.

(E) to (H) to (I); also (F) to (G):
Dense B sprouts, many broken  by 4/15/07
ice storm with hanging leaders. Many BC tops

down from ice, too. YBr can grow up to 12"/year in places - saplings in sunnier spots. Mostly 6 to 8".

The grove is windier + silent this day except for an occasional plane + raven.

(D) 3028' Mitch this high + \$INT. NO \$COMPRL noted. Some SUB, but BC dom + with dense B sprouts.

ages for whole grove estimated